

Special 5B + 5D R&D Rotary Bi-Layer Tablet Press



MTP-5x5 Bi w/Tablet Press Monitor Instrumentation

The stand alone design is ideal for formulation development as well as for making small production sized batches while meeting cGMP standards. It can be used for single or bi-layer tablets. The MTP- 5 X 5 is a 10 station press designed for use with either 5 B or 5D tools at compression forces of up to 60 kN.



Mendel Company

12C Great Meadow Lane
East Hanover, NJ 07936

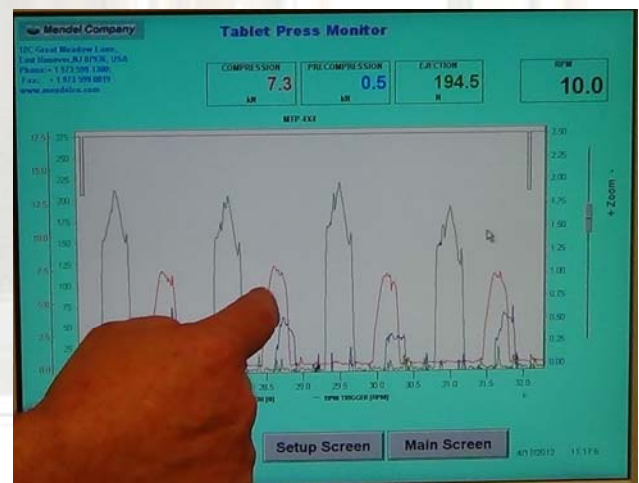
Phone: 973-599-1300
Fax: 973-599-0019
Email: sales@mendelco.com
Web: www.mendelco.com

Technical Specifications:

Model	MTP-5x5
Stations	10
Tooling	5B or 5D
Maximum compression (KN)	60
Pre-compression or first layer (KN)	10
Maximum tablet diameter (mm)	19
Depth of fill (mm)	20.5
Upper punch penetration (mm) 2nd layer	3~6
Speed Range (rpm)	15 to 45
Output Range (tablets/minute)	75 to 225
Power Consumption	5.25 hp/3.9 kW
Voltage	220V, 3ph, 60Hz
Dimensions (mm)	720x880x1500
Net weight (kg)	850

Special Features:

- **Easy adjustment of fill depth and tablet thickness using guide wheels**
- **Equipped with adjustable height compression rollers on top & bottom**
- **Variable speed turret and force feeder**
- **Overload pressure release mechanism**
- **Easy accessibility for maintenance and cleaning and quick tooling changeover**
- **Instrumentation is optional for 1st and 2nd layer compression and ejection forces for each punch**
- **Peak detection and full analysis software available**



Scaled forces for Pre-Comp, Main and Ejection,

12C Great Meadow Lane
East Hanover, NJ 07936

Phone: 973-599-1300
Fax: 973-599-0019
Email: sales@mendelco.com
Web: www.mendelco.com

 **Mendel Company**