

Fluid Bed Processor Model MFB-60/120



Control and Process Features

- Touch Screen Wall Mount Panel
- Inlet, Outlet and Product Temperatures
- Split Filter Shake Time and Intervals
- Bowl Lift and Lower
- Batch Record Printer
- Top and Bottom Spray Arrangement
- Electrical or Steam Pre-Heater and Heater
- Dehumidification
- Differential Pressure Gauges
- Atomizing Air Pressure Regulators
- Variable Speed Fan
- Air Assist Bottom Spray Discharge
- Peristaltic Multi-Pump, Tank and Cart
- Emergency Stops

MFB-60/120 Production Fluid Bed Granulator/Dryer

GMP design for processing 60 to 120 kilos

5 Top Spray Ports (includes lance) and 3 Bottom Spray Nozzles

Type 316 stainless steel for all product contact parts

Pharmaceutical inside mirror finish

Three interchangeable conical process bowls

Swing away/tilting bowl design

Sanitary clamp for ease of bowl removal

Split shaker filter bag

Sample thief

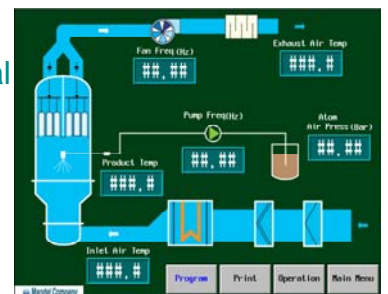
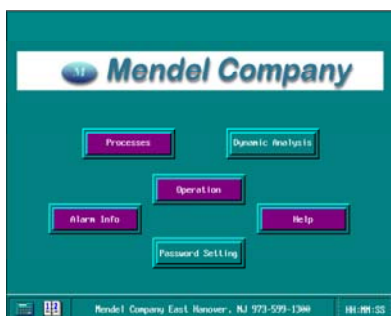
Dimensions (m): 5 L x 4 W x 5 H

Variable speed fan

Power requirements, 35 Kw, 4-6 bar air pressure

Service and spare parts provided from our facility

Technological expertise and testing for process optimization



 **Mendel Company**

12C Great Meadow Lane
East Hanover, NJ 07936

Phone: 973-599-1300

Fax: 973-599-0019

Email: sales@mendelco.com

Web: www.mendelco.com

MFB-60/120 Specifications

Production capacity	60 to 120 kilos			
Air flow capacity	4,500 m ³ /hr			
Fan Power	30 Kw			
Static Pressure	50 inches of water column			
Steam Consumption	To 80 C	Total Power	Kw	134
Compressed air bar	4 to 6	Consumption	m ³ /hr	110-270
Noise	Less than 63 dB			
Dimension (LxDxH)	5 x 4 x 5 m			
Net weight	6,000 Kg			



 **Mendel Company**

12C Great Meadow Lane
East Hanover, NJ 07936

Phone: 973-599-1300

Fax: 973-599-0019

Email: sales@mendelco.com

Web: www.mendelco.com